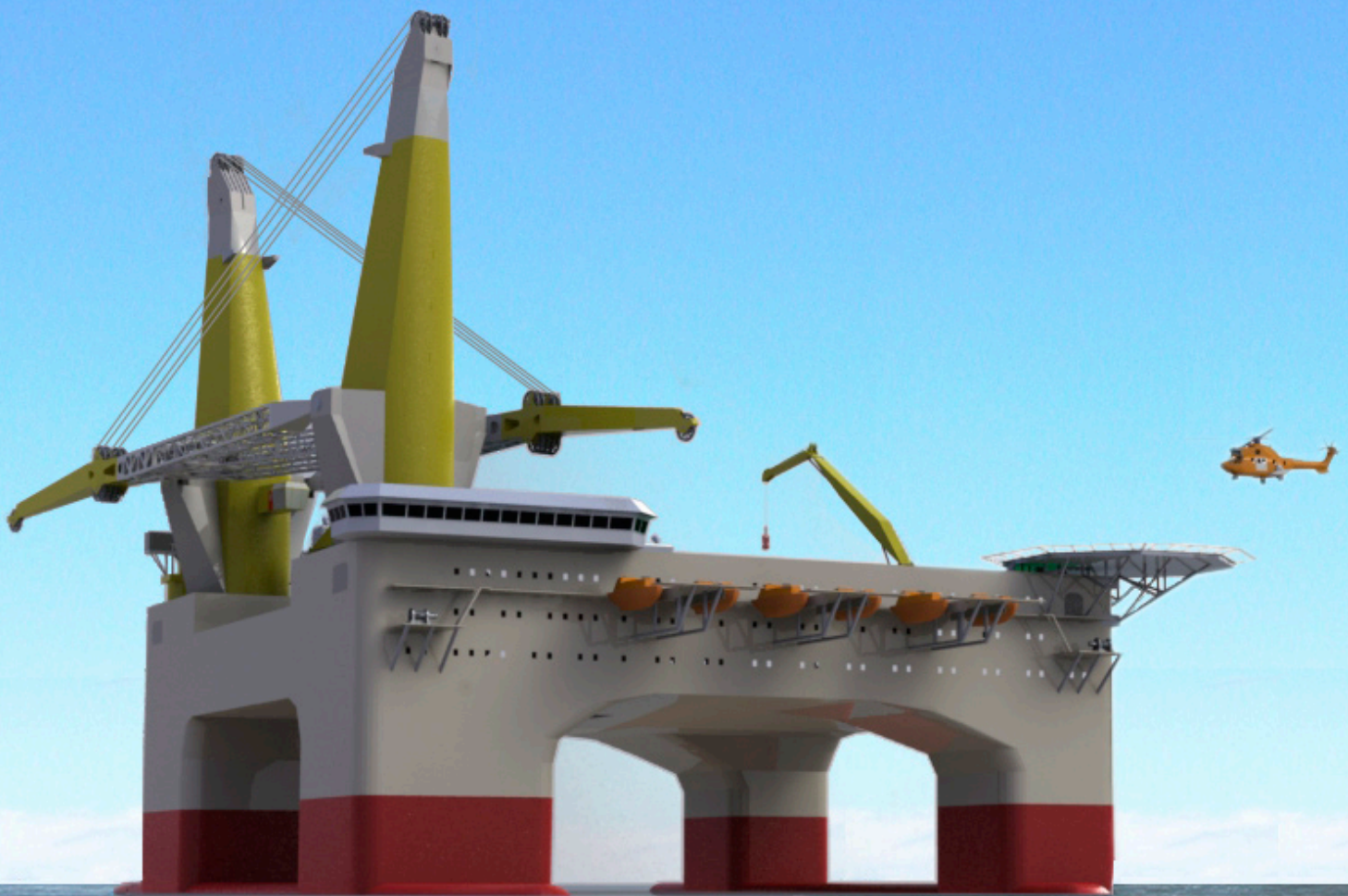


Your partner in innovative solutions



## Vision:

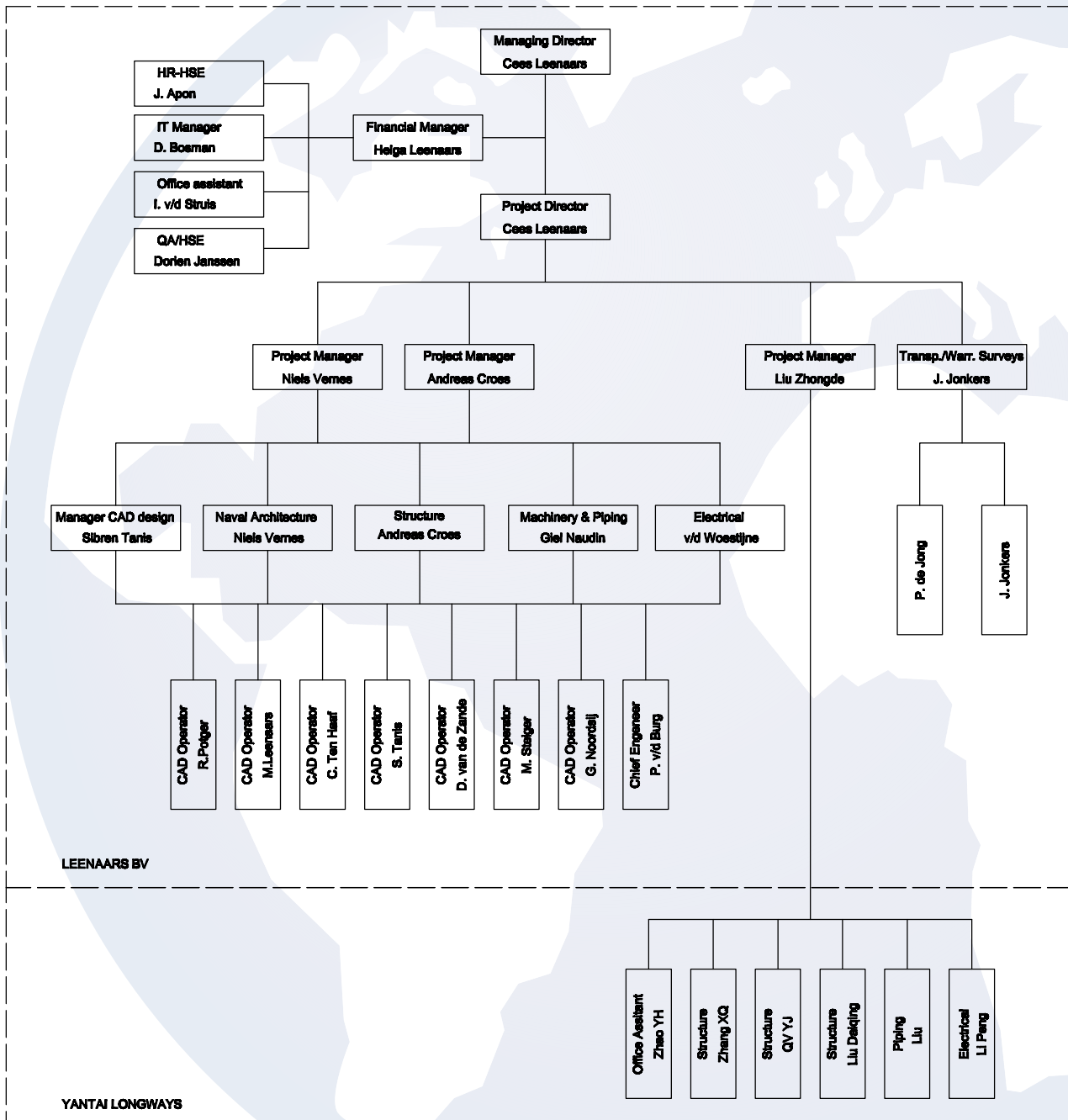
- Leenaars bv focuses on the design of challenging marine and offshore projects worldwide.
- We believe in a strong cooperation with our clients to find the best technical and most economically viable solution for their projects.
- Creativity combined with experience is the strength we build on.

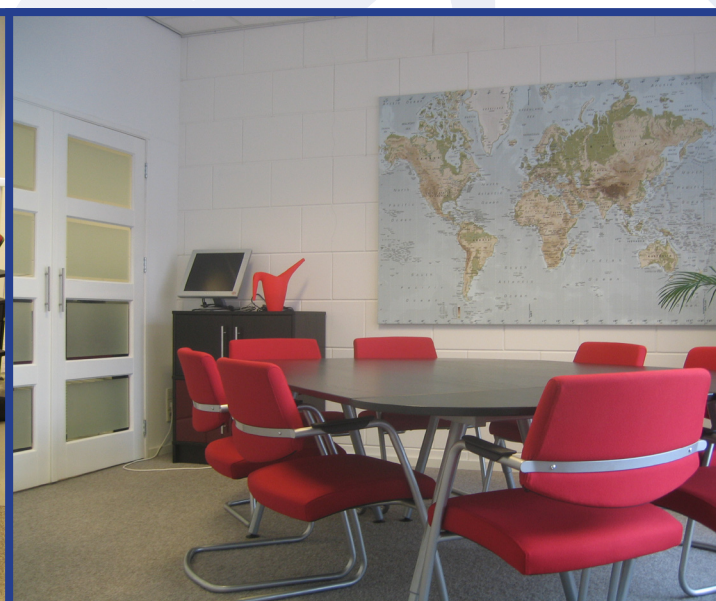
## Mission:

- After careful analysis with the client we determine the key drivers of their projects.
- We provide innovative solutions for these key drivers.
- The best solution is determined by the finest and experienced professionals.



## ORGANIZATION CHART





## Innovation:

Leenaars is on the forefront of several developments in the marine and offshore industry and holds several patents on platform removal offshore discharge and offshore equipment:

### R&D Projects

- Mating/Float over.
- KSHLV / King size heavy lift vessel
- Sea fastenings
- Safetrans: International guidelines on transportation of heavy cargo's
- Joint Industry Project thrusters 1 and 2:
- New Hull shapes 1 and 2:
- Voyage acceleration climate:
- Comkiss: Evaluation worldwide satellite measurements
- Developed the On board advisory system with Marin and Meteo consult.

## Quality

To further enhance the quality of their management systems Leenaars has committed itself to implementing ISO 9001 ; 2008

Leenaars BV is certified by Lloyds.

## Ship design and Conversions references:

*Designed the following new builds and conversions:*

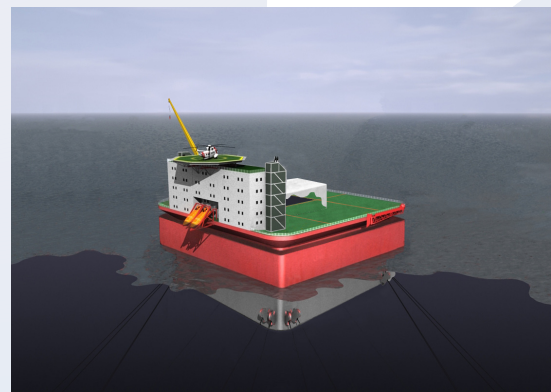
- SLOUFO offshore platform.
- High speed WIG/Swath hybrid.
- Twin keel sailing vessel.
- Yacht carrier
- Deepwater installation vessel.
- Clay lay pontoon.
- High speed repair vessel.
- Cable ships Knight and Baron
- Mega Marlin
- King size heavy lift vessel.
- Conversion SS3 and SS4 to yacht-carrier.
- Jumboising MS 1
- Conversion Coastal Connector and Provider to cable layers.
- Conversion Mega Marlin
- Design CS Knight & Baron
- Design of Yacht Express
- Design of pipe layer for Helix
- Design of several transport barges
- Design of 5000 tons semisubmersible crane vessel for Consafe.
- Design of Jack Up Carrier for YTR
- Design of Ring Pontoon for YTR
- Design of Drydock Barge for Fairmount



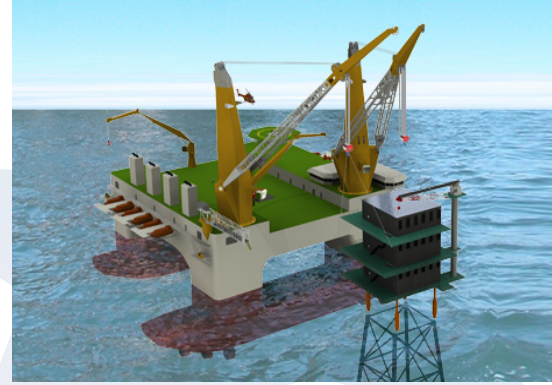
## Structural design references:

*Structural design of the following vessels.*

- |           |  |
|-----------|--|
| Nedlloyd; | - Ro/Ro vessel Rochester.                |
| Nedlloyd: | - Cont. vessel Houtman                   |
| DW        | - Heavy lift vessels , DE 10, DE12, DE20 |
| Volker    | - Semi subm. Dredger Camel.              |
| Shell     | - Several 300.000 tons dtw tankers       |
| FELS      | - Jack Up Panon                          |



Land & Marine	- Jack Up Sungai Bullan
VERB	- 300.000 tdw Bulkcarriers
Verolme Corck	- Passenger ferry
Verolme Corck	- Connacht. Fishery protection vessel.
Mij Zeeland	- Prinses Beatrix.



## Equipment design:

Designed the following offshore equipment:

LIT trolley

King post mast crane.

Cable hauler.

Double drum engine.

Pipe tensioner.

Dynamometer.

Mobile cable reel.

Traction winch.

A frames

Airbag skid system.

Fork lift method.

Rock dumping system

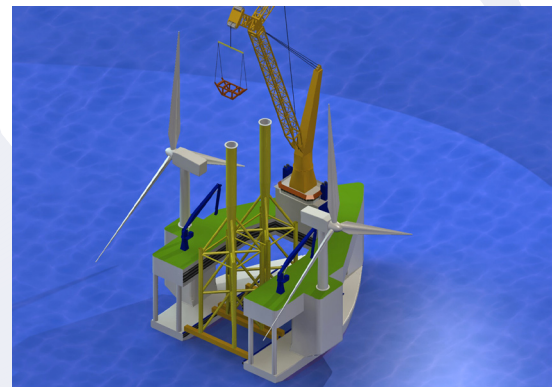
Spud pole systems

Several spreaders

Gin poles

Non welding sea fastening.

Boat stands



## Products and software used:

The following software is used in:

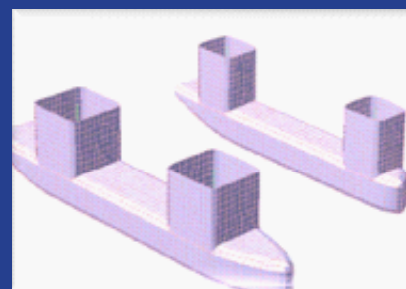
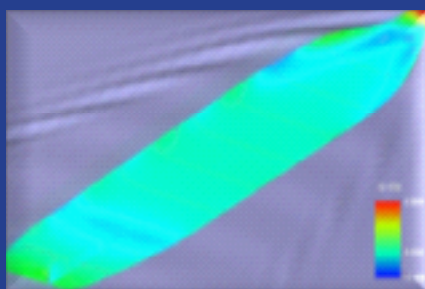
Design: SolidWorks; AutoCAD; Catia and AutoHydro

Finite Element Analysis: COSMOS

Stability: GHS, Autoship, MaxSurf.

Motion Analysis: AQWA and Shipmo and Safetrans





ISO 9001



Pascalweg 19  
3225 LE Hellevoetsluis  
The Netherlands  
t +31 (0) 181-316305  
w [www.leenaars-bv.nl](http://www.leenaars-bv.nl)



Xingang Street 207-10  
Zhifu District, Yantai  
Shandong Province China  
t +86 535 6743910  
@ [lzd76529@163.com](mailto:lzd76529@163.com)